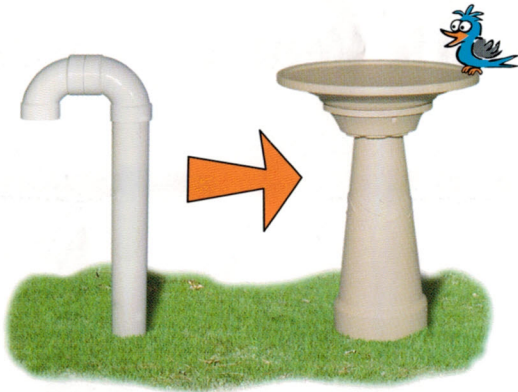


INFORMATION

"Only the **DIRTY BIRD™** has been purposely designed, engineered and developed to serve as a concealment device for septic system vent pipes. Imitation products are merely existing ornamental products modified for a purpose they were never *originally* designed for.

Through several years of research and development, BS Design has created a product that offers an attractive alternative to vent pipes, with an integrated odor-controlling filter that *meets or exceeds* all current regulations.

The patented design of the **DIRTY BIRD™** allows it to easily slip over the vent pipe and subsequently serve as a functional septic system vent and odor control filter.



- Attractive alternative to current venting/filtration methods and devices
- Birdbath designed with birds in mind
- Lightweight
- Durable
- Recyclable
- Fade Resistant (UV Stabilized)
- 5 year warranty on breaking and chipping
- Fits 4" and 6" ID PVC pipe, adaptable to other sizes
- Made in USA

Materials

- 100% Rotomolded LDPE (Low Density Polyethylene)
- All Stainless Steel Hardware

Overall Dimensions (approximate)

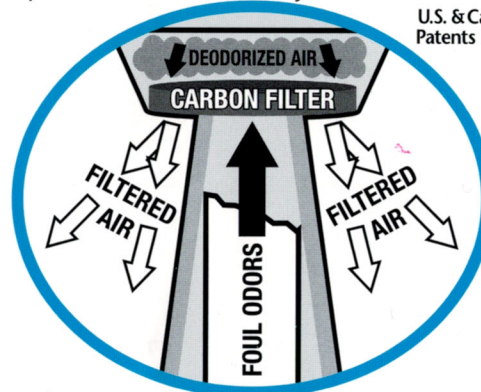
- Height: 32 inches
- Basin width: 23 inches
- Footprint: 12.25 inches

All specifications are subject to change without notice.

VENTILATION

Traditional "candy canes" merely vent septic fumes and foul odors into your yard. The **DIRTY BIRD™** controls odors through its unique patented air-filtration system and simultaneously replaces an unsightly element of your landscape with a more customary feature.

U.S. & Canadian Patents Pending



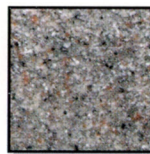
Filtration

- Activated Carbon Impregnated Non-Woven Polyester Filtration Media
- User Serviceable Filter Element

OPTIONS

Colors

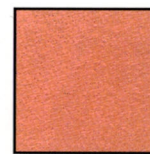
Complimenting your current landscaping is easy with several* molded colors to choose from:



Granite



Sandstone



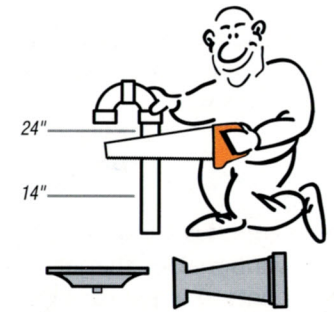
Terra cotta



***Works with 4" vacuum sewer system vents.**

Use part number DB-AV when ordering. Charcoal filter replaced with stainless steel screen.

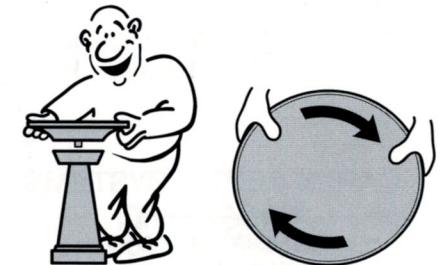
INSTALLATION



- 1** Unpack contents. Make sure ground is fairly level at base of pipe. Cut the pipe with a saw anywhere between 14 and 24 inches from the ground.
*6 inch pipe, cut between 5 and 10 inches.



- 2** Slide the pedestal over top of the cut pipe. Push down until base is flush with the ground. Your vent is now fully functional! You can use it as a pedestal* or proceed to the next step.
*Do not place an item more than 20 lbs. or higher than 12 inches on top of pedestal.



- 3** Align threaded basin stem with hole on pedestal. Turn basin clockwise just until it stops. Your vent has been converted into a beautiful bird bath. Basin can be easily removed for periodic cleaning.

THAT'S ALL!